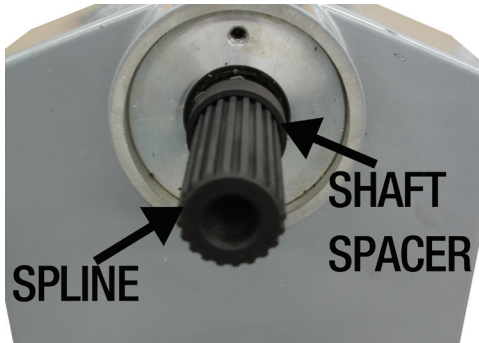
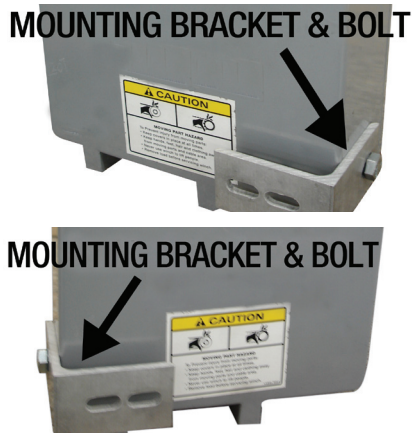


*** DANGER - CAUTION ***

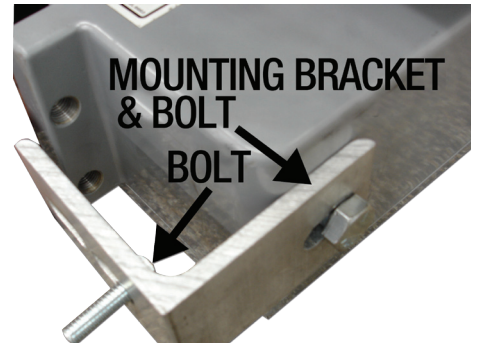
Always Lower The Boat Lift Before Attempting Assembly.



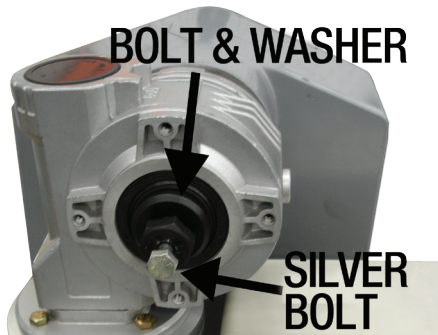
1. Lower the Boat Lift.
2. Remove the Wheel.
3. Install the Spline and the Shaft Spacer.



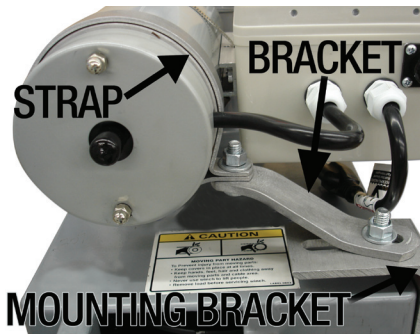
4. This Lift has Two Options. The Most Common will be Mounting on the Right Side.



5. Slide the Left Bolt into the Mounting Bracket. Move the Bracket up. Install the Right Bolt into the Bracket and Tighten.



6. Slide the Motor Down onto the Spline. Install the Black Washer and Bolt. Tighten to Approximately 70 Foot Pounds. Install the Silver Bolt. Tighten to Approximately 35 Foot Pounds.



7. Install the Motor Strap Around the Motor. Install the Bracket onto the Mounting Bracket and onto the Strap with the Bolts Provided.

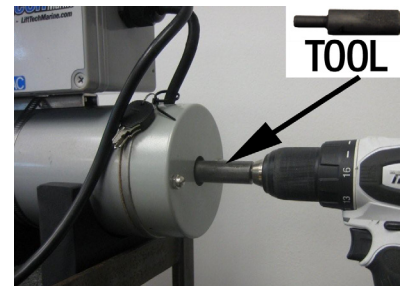


8. Tighten all Bolts.
9. Plug in and Enjoy!

In Case of a Power Outage This Tool May be Inserted Into a Drill to Raise or Lower Your Lift. First Remove Rubber Cap From the Motor Shaft.

Recommended Extension Cords up to 150 feet 12/3.

Any question regarding electrical current requirements please call your Authorized Dealer or Lift Tech Marine 1-866-319-8877.



*** DANGER - CAUTION ***

All Power Used on Your Dock or Lift Needs to be GFI Protected at the Shoreline.